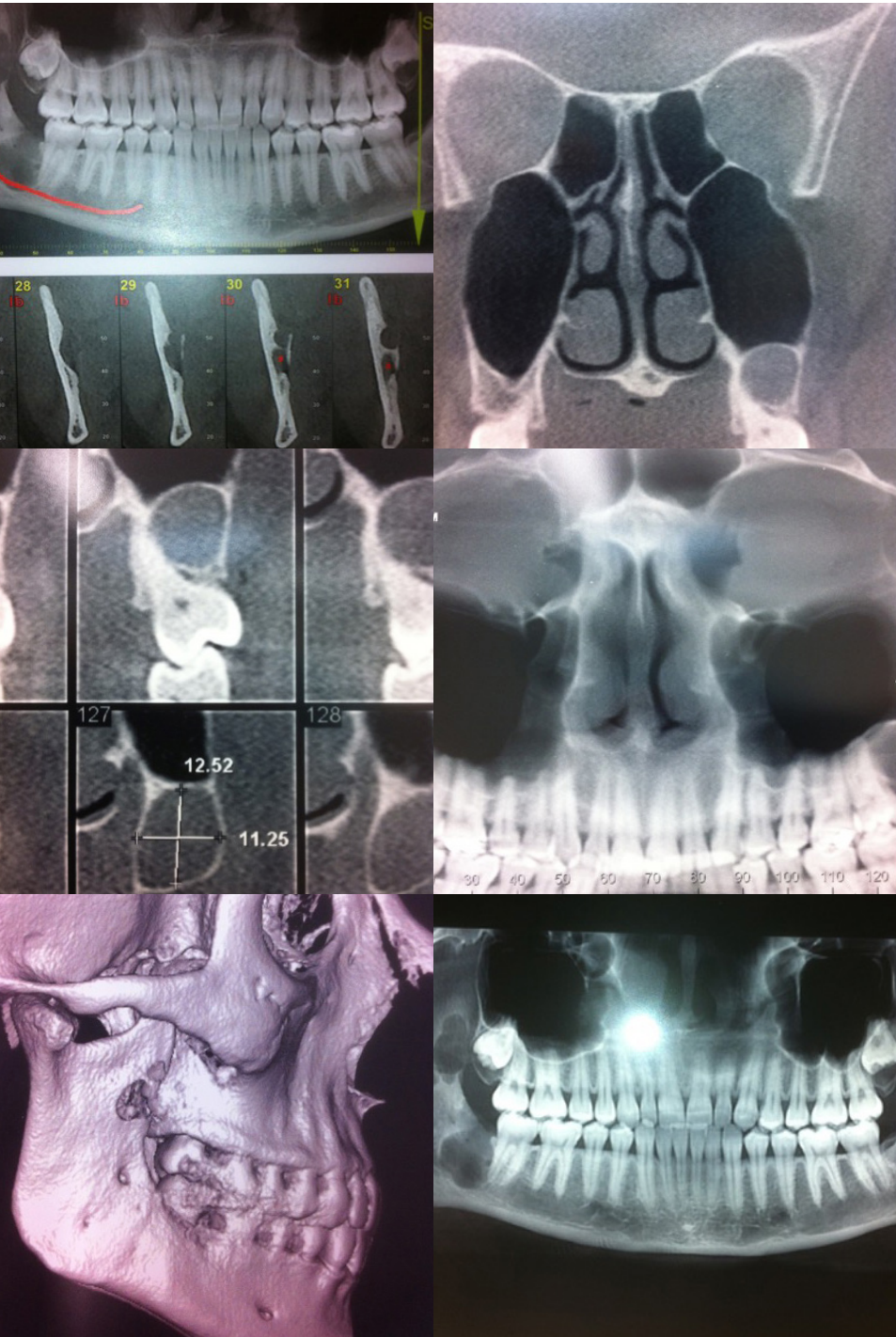


## From the teaching clinics: **Oral and Maxillo Facial Surgery**



### CASE STUDY:

*As depicted in the images of the mandible and maxilla, 2 separate patients*

- Both cases demonstrate the entity “Keratocystic Odontogenic tumour”
- Previously described as primordial cyst, keratocyst. They are a rare and benign developmental dental cyst arising from the dental lamina
- May exhibit parakeratinising or orthokeratinising histology infiltrating bone and soft tissue
- Mandible most commonly affected, although anywhere in maxilla including expansion into the maxillary antrum also possible
- Possible association with Gorlin-Goltz syndrome
- Consider enucleation and Carnoy’s solution, high rate of recurrence noted despite apparently successful treatment
- Resection of large pathological defects and immediate bone graft also practised

**The MaxilloFacial Unit is staffed by Consultants at the private Macquarie University Teaching Hospital, Sydney, Australia.**

We provide inpatient facilities and outpatient clinics in Oral and MaxilloFacial Surgery where all the health funds are recognised and have contracts for the care of their members. The MaxilloFacial Unit has strategic relationships with other groups including Olympus Stem Cells Pty Ltd and Olympus MaxilloFacial Care Pty Ltd that jointly participate in complex cases involving the use of Stem Cells. The MaxilloFacial Unit provides primary, secondary and tertiary care for patients with all conditions, anomalies or diseases.

## SPECIALISING IN MAXILLOFACIAL CARE

Suite 301, Australian School of Advanced Medicine,  
2 Technology Place, Macquarie University Hospital,  
Macquarie Park, Sydney, NSW. P: 02 9812 3990  
E: [info@themaxillofacialunit.com.au](mailto:info@themaxillofacialunit.com.au)

**ALL APPOINTMENTS PHONE**  
**1300 ORAL MAX**  
[www.themaxillofacialunit.com.au](http://www.themaxillofacialunit.com.au)